

OWNERS MANUAL

...with installation instructions

Banks Stinger® System

Jeep 4.0L I-6 Models including:

1991-95 Wrangler (YJ)

1997-99 Wrangler (TJ)

2000-03 Wrangler (TJ)

THIS MANUAL IS FOR USE WITH SYSTEMS 51311, 51312 & 51313

Gale Banks Engineering
546 Duggan Avenue • Azusa, CA 91702
(626) 969-9600 • Fax (626) 334-1743

Product Information & Sales: (800) 438-7693
Customer Support: (888) 839-5600
Installation Support: (888) 839-2700

bankspower.com

Dear Customer,

If you have any questions concerning the installation of your Banks Power System, please call our Technical Service Hotline at (888) 839-2700 between 7:00 am and 5:00 pm (PT). If you have any questions relating to shipping or billing, please contact our Customer Service Department at (888) 839-5600.

Thank you.

General Installation Practices

1. For ease of installation of your Banks system, familiarize yourself with the procedure by reading the entire manual before starting work.
2. The exploded view (**Figure 1**) provides only general guidance. Refer to each step and section diagram in this manual for proper instruction.
3. Throughout this manual, the left side of the vehicle refers to the driver's side, and the right side to the passenger's side.
4. Disconnect the ground cable from the battery (or batteries, if there are two) before beginning work.
5. Route and tie wires and hoses a minimum of 6" away from exhaust heat, moving parts and sharp edges. Clearance of 8" or more is recommended where possible.
6. When raising the vehicle, support it on properly weight-rated safety stands, ramps or a commercial hoist. Follow the manufacturer's safety precautions. Take care to balance the vehicle to prevent it from slipping or falling. When using ramps, be sure the front wheels are centered squarely on the topsides; put the transmission in park; set the hand brake; and place blocks behind the rear wheels. **Caution! Do not use floor jacks to support the vehicle while working under it. Do not**

raise the vehicle onto concrete blocks, masonry or any other item not intended specifically for this use.

7. During installation, keep the work area clean. Do not allow anything to be dropped into intake, exhaust, or lubrication system components while performing the installation, as foreign objects will cause immediate engine damage upon start-up.

Tools Required:

- 1/4" and 3/8" drive ratchets with inch and metric sockets and 1/4" and 3/8" drive extension
- Inch and metric combination or open-end wrenches
- Standard screwdriver
- Standard and needle-nose pliers
- Clean shop towels or rags

Highly recommended tools and supplies:

- Inch-pound and foot-pound torque wrenches
- Compressed air source and hose
- Air pressure regulator
- Penetrating oil or light lubricant spray
- Reciprocating saw

Installation Instructions

1. Raise the vehicle on a hoist or safety stands to provide access to the exhaust system.

2. For 2000-03 models, remove the 10-mm hardware from the catalytic converter and muffler connection. For all other models, loosen and remove the clamp that connects the factory muffler to the catalytic converter. An oxyacetylene torch may be useful at the muffler and catalytic converter connection. (If applicable, be sure to remove the O₂ sensor on the catalytic converter before operating the torch.)

3. Remove the hanger pins from the rubber hangers at the rear of the tailpipe. (Spray lubricant will ease hanger removal.) Remove the muffler and tailpipe from vehicle. Cutting the tailpipe may ease the removal process.

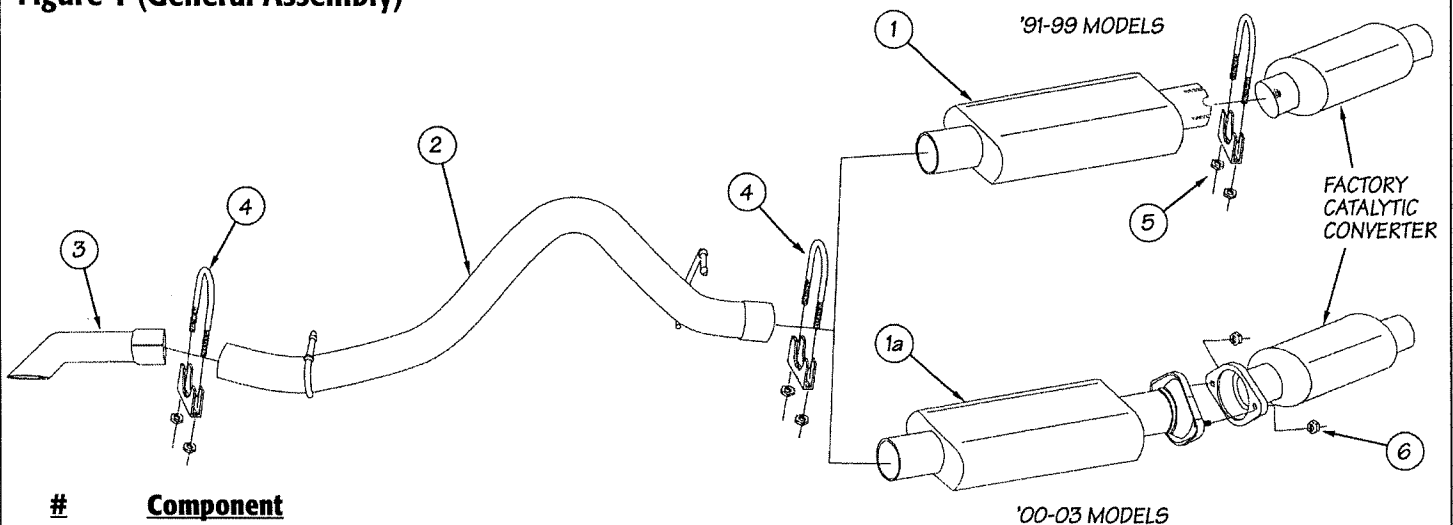
4. Install the Banks Dynaflow muffler onto the catalytic converter. Be sure the exhaust inlet is facing towards the catalytic converter. For 2000-03 models, loosely install the supplied 10-mm hardware onto the catalytic converter and muffler studs. For all other models, position the muffler so that it is straight and level with the vehicle. Loosely install the supplied 2½" clamp onto the muffler and catalytic converter connection (see **Figure 1**).

5. Place a supplied 2½" clamp onto the Banks Dynaflow muffler outlet. Install the tailpipe over the rear axle housing onto the outlet of the muffler. Connect the tailpipe hanger pins to the factory rubber hangers.

6. Slip the 2½" polished tailpipe turndown tip over the tailpipe. The tailpipe tip should be completely pressed onto the tailpipe. Install a supplied 2½" clamp about a ½" on the rear of the turndown tip (so that clamp rests on the tailpipe cutouts).

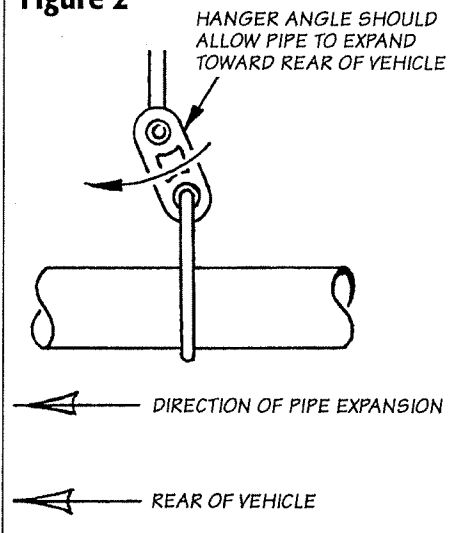
7. Position all the exhaust components such that all the hanger pins are parallel with the frame pins and all exhaust tubing is located properly. Lightly tighten clamps to maintain position. The tailpipe tip should be position 1-2" below the bottom edge of the vehicle body. All hangers should be hanging slightly forward to allow for heat expansion of the exhaust tubing (see **Figure 2**).

Figure 1 (General Assembly)



#	Component
1	Assembly, Dynaflow Muffler '91-99
1a	Assembly, Dynaflow Muffler '00-03
2	Pipe, 2½" Tailpipe
3	Tailpipe Turndown Tip
4	(2) Clamp, 2½"
5	Clamp, 2½"
6	(2) Nuts, serrated 10-1.50 ('00-03 models only)

Figure 2



8. With everything positioned properly, torque the 10-mm hardware (on 2000-03 models) and clamps to 25-30 ft-lbs.

9. Reconnect the battery. Start the vehicle and listen for exhaust leaks. Tighten the clamps as necessary. Whenever possible, tack-welding slip connections to prevent disengagement is recommended.

Note: *The vehicle exhaust may smoke upon initial start-up. This is normal, as grease used in the tube bending process burns off the pipes.*

Parts List

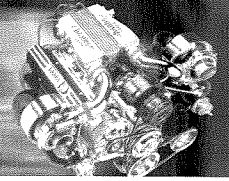
<u>P/N</u>	<u>Description</u>	<u>Qty</u>
51313	2000-03 Jeep Wrangler	
52429	Muffler, Banks Dynaflow	(1)
52652	Tailpipe	(1)
52973	Tip, Polished S.S.	(1)
52461	Clamp, Exhaust 2½"	(2)
91805	Nut, 10mm-1.5 Serrated	(2)
96392	Product Registration Card	(1)
96503	Warranty Statement	(1)
96009	Decal, Banks Power	(2)
51312	1997-99 Jeep Wrangler	
52427	Muffler, Banks Dynaflow	(1)
52651	Tailpipe	(1)
52973	Tip, Polished S.S.	(1)
52461	Clamp, Exhaust 2½"	(2)
52460	Clamp, Exhaust 2¼"	(2)
96392	Product Registration Card	(1)
96503	Warranty Statement	(1)
96009	Decal, Banks Power	(2)
51311	1991-95 Jeep Wrangler	
52427	Muffler, Banks Dynaflow	(1)
52650	Tailpipe	(1)
52973	Tip, Polished S.S.	(1)
52461	Clamp, Exhaust 2½"	(2)
52460	Clamp, Exhaust 2¼"	(2)
96392	Product Registration Card	(1)
96503	Warranty Statement	(1)
96009	Decal, Banks Power	(2)

Gale Banks Engineering
546 Duggan Avenue • Azusa, CA 91702
(626) 969-9600 • Fax (626) 334-1743

Product Information & Sales: (800) 438-7693
Customer Support: (888) 839-5600
Installation Support: (888) 839-2700

bankspower.com

Warranty Statement



Banks Warranties

Banks Power systems and Banks Brake systems are designed to conform to vehicles operated within maximum load specifications. All applicable Banks systems are emissions-tested and certified in 50 states. Under federal law, vehicle manufacturers, dealers or agents cannot void vehicle powertrain or emissions warranties due to the presence of a properly installed Banks system.

All Banks products are backed by our warranty and reputation earned from a history of customer satisfaction since 1958. To the right is an overview of the warranty-coverage terms for the components, assemblies and sub-systems that comprise Banks power systems.

Product Warranty Categories

Banks Power Systems & Performance Parts

Ram-Air intake system	5-Year Ltd.
TwinRam intake system	5-Year Ltd. (rubber components, 2-yr)
Techni-Cooler intercooler, oil coolers	2-Year Ltd.
OttoMind engine calibration module	2-Year Ltd.
Big Hoss module	2-Year Ltd.
Sidewinder turbocharger assembly	2-Year Ltd.
Quick-Turbo assembly, discrete wastegate actuators	2-Year Ltd.
TorqueTube exhaust manifolds	Lifetime Ltd.
Dynaflow muffler, stainless steel	Lifetime Ltd.
Dynaflow muffler, aluminized steel	5-Year Ltd.
Monster exhaust, stainless steel	Lifetime Ltd.
Monster exhaust, aluminized steel	5-Year Ltd.
TransCommand	2-Year Ltd.
DynaFact instrumentation (gauges)	2-Year Ltd.
Git-Kits	2-Year Ltd.
PowerStick Cam-and-kit	2-Year Ltd.

Banks Exhaust Brake systems

Brake assembly*	5-Year Ltd.
Electrical components, pneumatic components, solenoid valve and auxiliary air supplies (where applicable)	2-Year Ltd.
Banks SmartLock	2-Year Ltd.

Unlimited Mileage Protection

Gale Banks Engineering (BANKS) warrants to the original purchaser that any parts purchased shall be free from defects in material and workmanship. A defect is defined as a condition that would render the product inoperable. This warranty does not cover deterioration of plating, paint or any other coating. BANKS liability is limited to the repair or replacement, at BANKS' option, of any warrantable product returned prepaid with a complete service history and proof of purchase to the factory. A valid proof of purchase is a dated bill of sale. Repaired or replaced product will be returned to the customer freight collect. Accepted warranty units which have been replaced become the sole property of BANKS. Mileage is not a factor. All banks products are subject to the provisions stated herein regardless of mileage.

Product returned for warranty determination must be accompanied by a Return Material Authorization (RMA) number obtained in advance from a BANKS customer service representative. BANKS will be the final authority on all warranty decisions.

This warranty shall not apply to any unit which has been improperly stored or installed; subjected to misapplication, improper operating conditions, accidents, or neglect; or which has been improperly repaired or altered or otherwise mistreated by the owner or his agent.

Labor costs incurred by the removal and replacement of a BANKS product, while performing warranty work, will be the responsibility of the vehicle owner. In no case does the obligation of Gale Banks Engineering exceed the original purchase price of the product as indicated on the original bill of sale. Warranty coverage applies only to the Banks product which shall be covered (1-year, 2-year, 5-year or lifetime) of the original vehicle it was installed upon, to the original purchaser.

Except as set forth in this warranty, BANKS disclaims any implied warranty, including implied warranties of merchantability and fitness for a particular purpose. **BANKS also disclaims any liability for incidental or consequential damages including but not limited to, repair labor, rental vehicles, hotel costs or any other inconvenience costs.** This warranty is in lieu of all other warranties or guarantees, either expressed or implied, and shall not extend to any consumer or to any person other than the original purchaser residing within the boundaries of the continental U.S. or Canada.

*Ltd. warranty does not cover service conditions (i.e. soot buildup in shaft bushings due to out-of-tune engine, or excess heat-damage due to overly-rich fueling conditions)